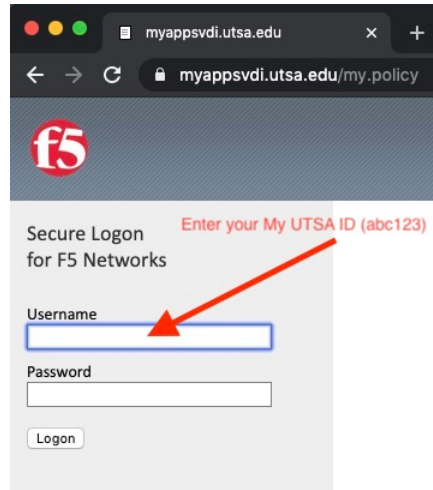


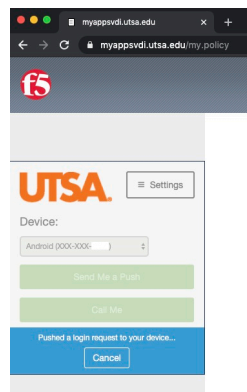
Instructions on how to connect to the Engineering Remote Desktop (myappsvdi)

You can use any web browser, but Chrome seems to be working better.

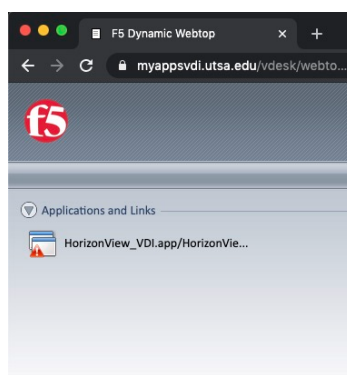
Go to <https://myappsvdi.utsa.edu> and login with your MyUTSA ID credentials (abc123).



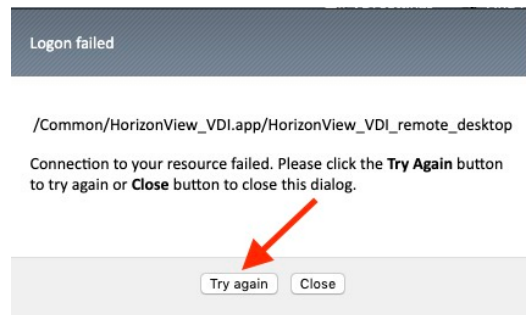
You will briefly see the DUO authentication request page, similar to the one below.



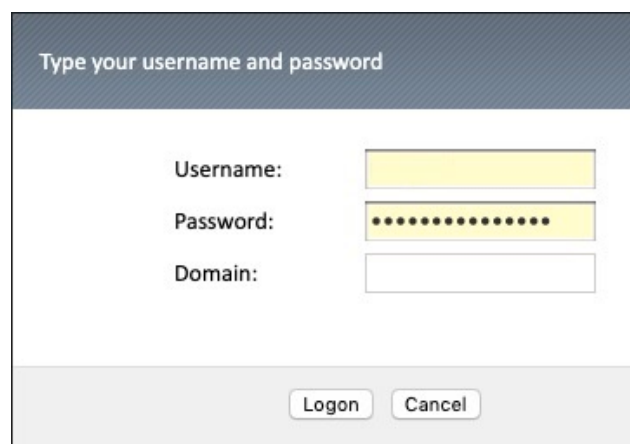
After you receive the DUO request on your phone and approve it, you should see the following.



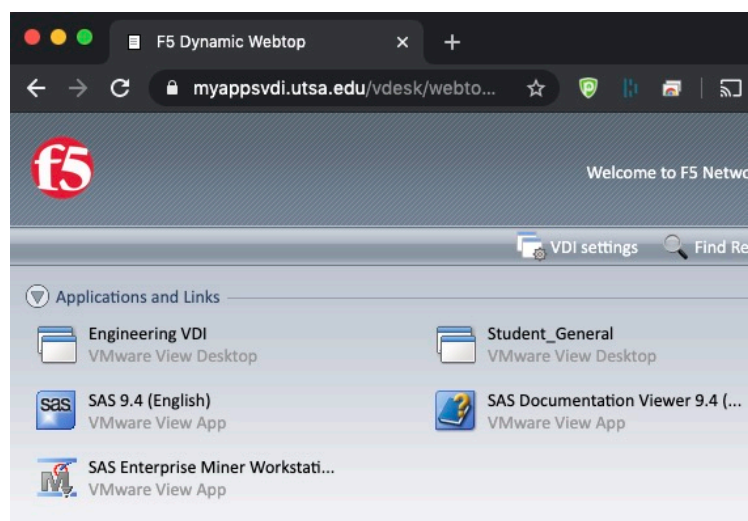
If there is a red exclamation mark, then click on the exclamation mark, and you will see the following.



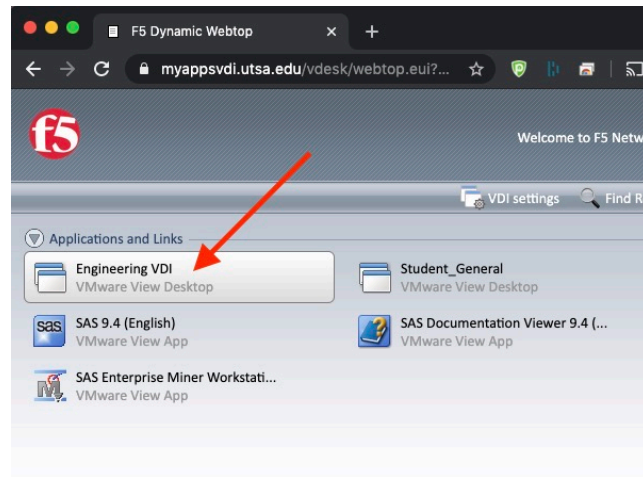
Click on the "Try again" and you should see the login screen as below.

A login screen with a dark blue header containing the text "Type your username and password". Below the header, there are three input fields: "Username:" with a yellow text box, "Password:" with a yellow text box containing ten dots, and "Domain:" with a white text box. At the bottom, there are two buttons: "Logon" and "Cancel".

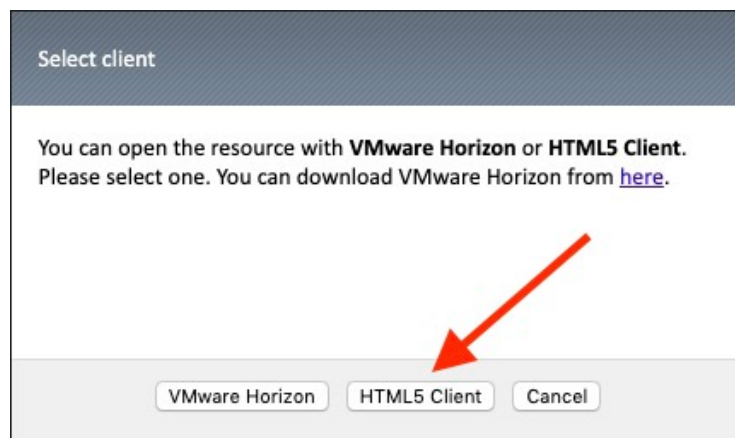
Type your credentials again (MyUTSA ID - abc123 format), and you should see the screen below.



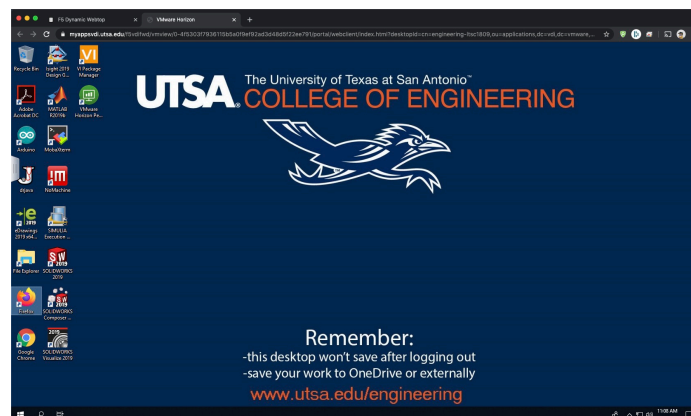
When you see the menu above, click on the "Engineering VDI".



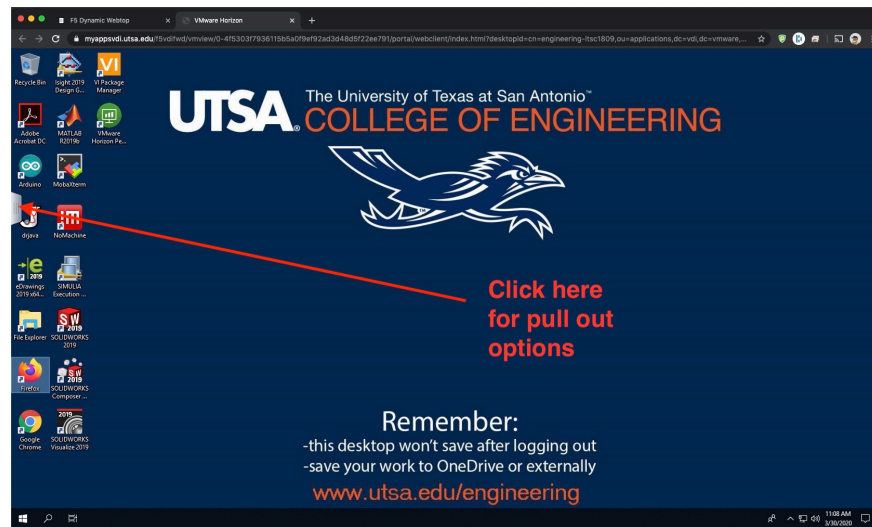
At this point, you will be presented with the option to select the “VMware Horizon” or the “HTML5” client. The quickest way is to select the HTML5 client. You can always change this selection for future connections under the “VDI settings” on the top right area of the webpage.



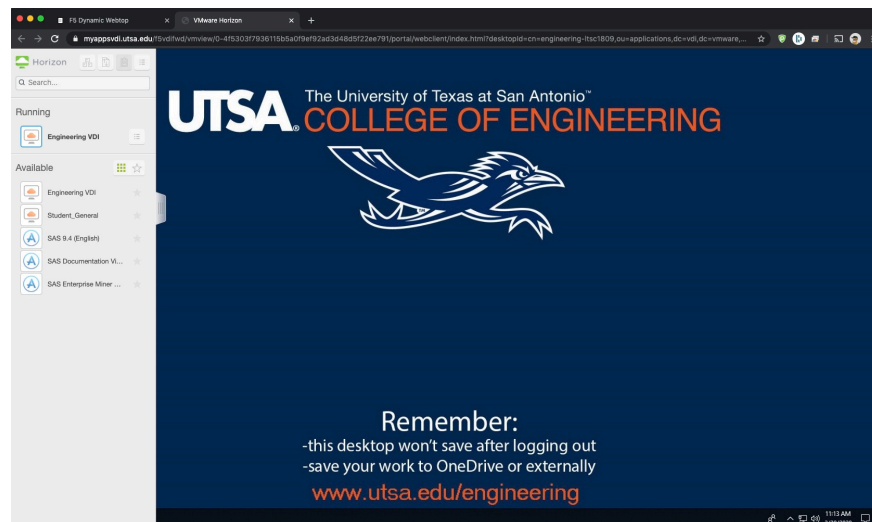
After about a minute, you will see a Windows 10 virtual machine like the one below.



For more options, click in the middle left side of the page.



And you will get this.



Make sure you save your work on OneDrive or on another similar place, since the moment you logout, everything on this Virtual machine will be removed (see Windows background warning).

If you want to download the “VMware Horizon Client” and install it, then you can use <https://myapps.vdi.utsa.edu> as the “Server” along with your MyUTSA ID credentials to login to the virtual machine. One of the advantages of having the Horizon Client is that you could connect (share) one of your local computer folders (like your home folder or My Documents for example), or even an external USB that is connected to your computer. You can look for these options under the “Preferences” section of the client. To see the shares, just click on the “File Explorer” shortcut on the Desktop, and then on “This PC”. You will then see the folders or USB that you shared on your local computer as “Network Drive (Z:)” or as “Network Drive (Y:)” etc., if you have more than one.